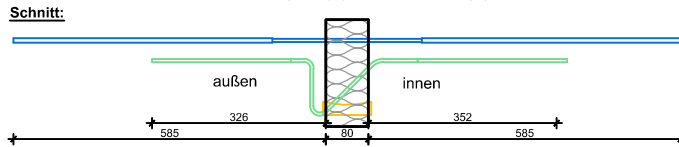


* Bei Q- und QP-Angaben ist nur der Schöck Isokorb® Typ Q im Schnitt dargestellt, kein QP gezeichnet (Druckknochen)!

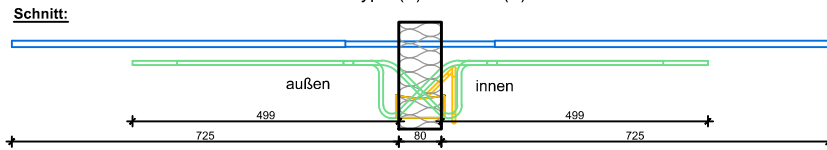
80mm

Schöck Isokorb® Typ 80mm Bewehrungslängen:

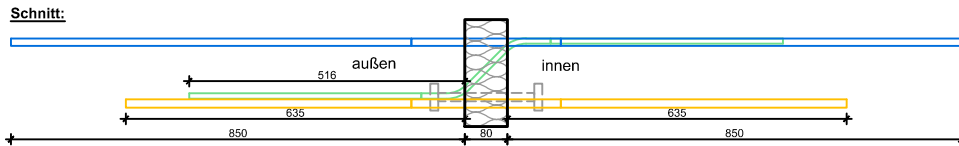
Schöck Isokorb Typ K(F)20-V6-V8 - K(F)47-V6-V8



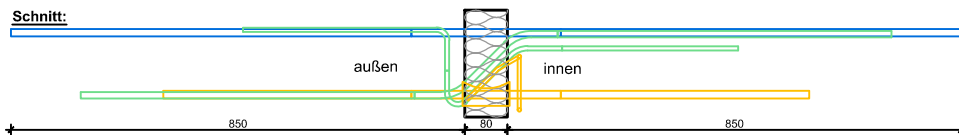
Schöck Isokorb Typ K(F)47-VV - K(F)100-V8-V10



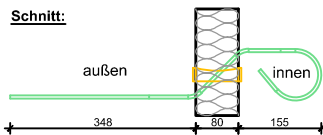
Schöck Isokorb Typ K110 (Drucklager) + K150 (Druckstäbe)



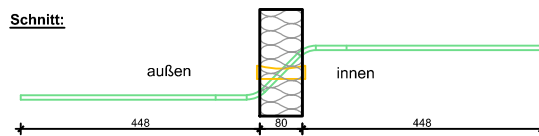
Schöck Isokorb Typ K(F)50 -Eck (=max. Stablängen)



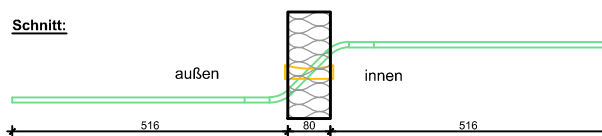
Schöck Isokorb Typ Q10-Q50



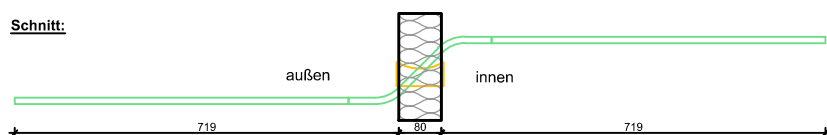
Schöck Isokorb Typ Q70 + QP10-QP30 *



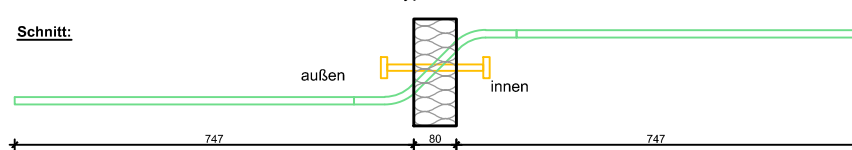
Schöck Isokorb Typ Q80-Q90 + QP40-QP50 *



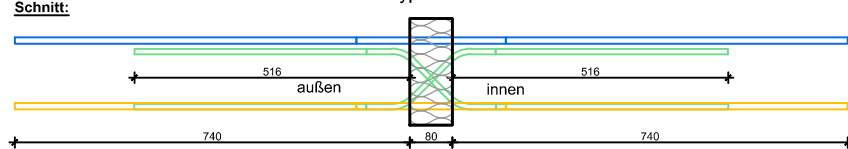
Schöck Isokorb Typ Q100-Q110 + QP60-QP70 *



Schöck Isokorb Typ QP80-QP90



Schöck Isokorb Typ D30-D90



Stand: 06.12.2017;
Anja Knösche